

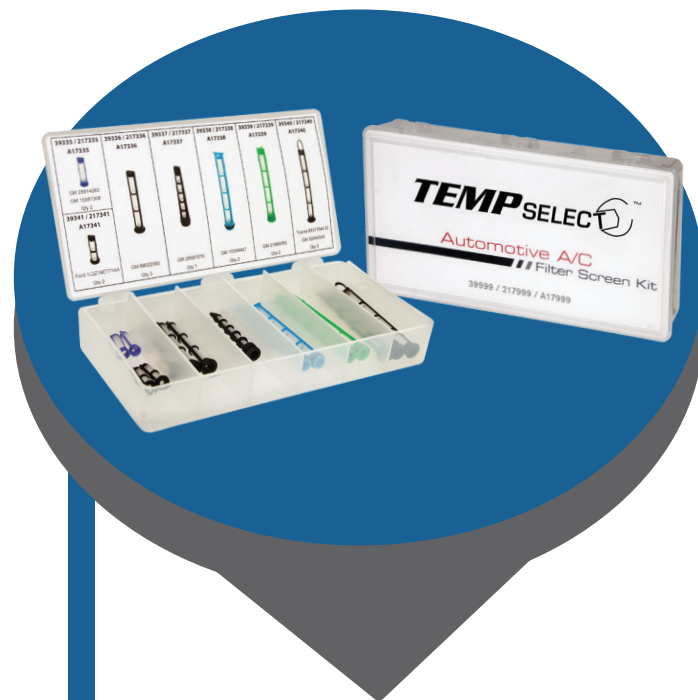


# A/C FILTER SCREEN KIT

## PART NO. 39999

Four Seasons® TEMP Select™ brand A/C Filter Screen Kit offers highly popular in-line filters in a convenient, lightweight box. The individual compartments and graphic card with O.E part number reference, make it easy to find what you're looking for in a more timely and efficient manner.

4S P/N	Color	O.E. #	Short #	Location	Applications
39335	Purple	25914263	15-33883	Rear Expansion Valve	<b>Rear Unit</b> 2016-09 Buick Enclave 2016-09 Chevrolet Traverse 2015-09 GMC Acadia 2010-09 Saturn Outlook
	Blue/ Purple	15951308	15-10712	Rear Expansion Valve	<b>Rear Unit</b> 2008 Buick Enclave 2008-07 GMC Acadia 2008-07 Saturn Outlook
39336	Black	89022560	15-75209	Rear Expansion Valve	<b>Rear Unit</b> 2016-07 Cadillac Escalade 2016-07 Chevrolet Suburban 2006-02 Chevrolet Trailblazer 2016-07 GMC Yukon XL 2006-02 GMC Envoy 2006-03 Isuzu Ascender
39337	Black	25687579	15-8947	Condenser Outlet	2003-01 Olds Aurora
39338	Blue	10356437	15-75159	Condenser Outlet	2009-06 Buick Allure 2009-06 Buick Lacrosse 2016-06 Chevrolet Impala 2006-07 Monte Carlo 2008-05 Pontiac Grand Prix
39339	Green	21999762	15-33197	Condenser Outlet	2011-06 Buick Lucerne 2011-06 Cadillac DTS
39340	Black	88377-04010	15-75210	Expansion Valve	2009-05 Toyota Tacoma
	Black	52494593		Condenser Outlet	2014-07 Cadillac Escalade 2009-04 Cadillac XLR 2010-05 Chevrolet Cobalt 2013-05 Chevrolet Corvette 2011-06 Chevrolet HHR 2012-04 Chevrolet Malibu 2010-07 Pontiac G5 2010-05 Pontiac G6 2009-07 Saturn Aura 2007-03 Saturn Ion 2009-08 Chevrolet Silverado 2014-07 Chevrolet Suburban 2014-07 Chevrolet Tahoe 2009-08 GMC Sierra 2014-07 GMC Yukon
39341	Black	1L2Z-19E771AA	YF-2706	Rear Expansion Valve	2009-05 Ford Escape 2005-02 Ford Explorer 2005-03 Lincoln Aviator 2009-08 Mazda Tribute 2009-05 Mercury Mariner 2005-02 Mountaineer



### DID YOU KNOW?

Many of today's A/C systems employ an in-line filter screen before the expansion valve in order to trap debris and dissipate refrigerant oil. These filters should be inspected and/or replaced as part of any A/C system repair, but especially crucial when there has been a catastrophic compressor failure.

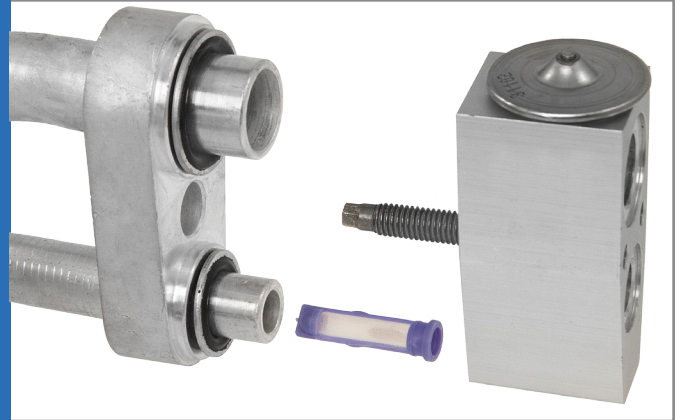
# LIQUID LINE FILTER

## LOCATION

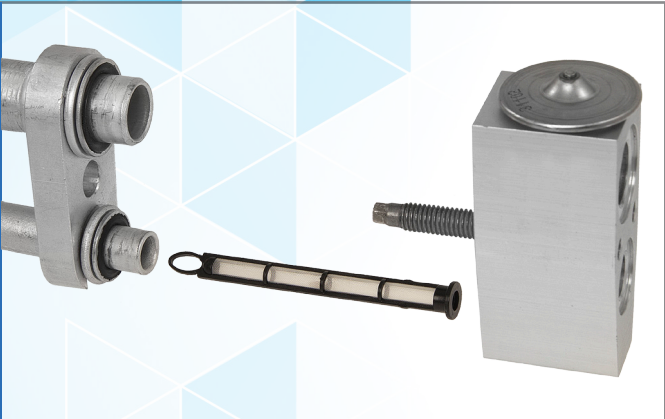
CONDENSER OUTLET



AT REAR TXV



IN LINE BEFORE TXV



ENGINE COMPARTMENT



## PLUGGED LIQUID LINE?

### DIAGNOSIS DEPENDS ON LOCATION

Before or After Service Port

PRESSURE	LOCATION
Low High Side Gauge Pressure Very Low/Vacuum Low Side Gauge Pressure	At Condenser Outlet or Engine Compartment
Pressure Normal, Front Cooling, Rear No Cooling	At Rear TXV
Low High Side Gauge Pressure Very Low/Vacuum Low Side Gauge Pressure	At Rear TXV